

Components

- CAN to USB adapter (with Phoenix connector for field termination)
- CANable Lite software
- CANable Lite User Manual

Compatibility

- Windows 7, 8.x and 10

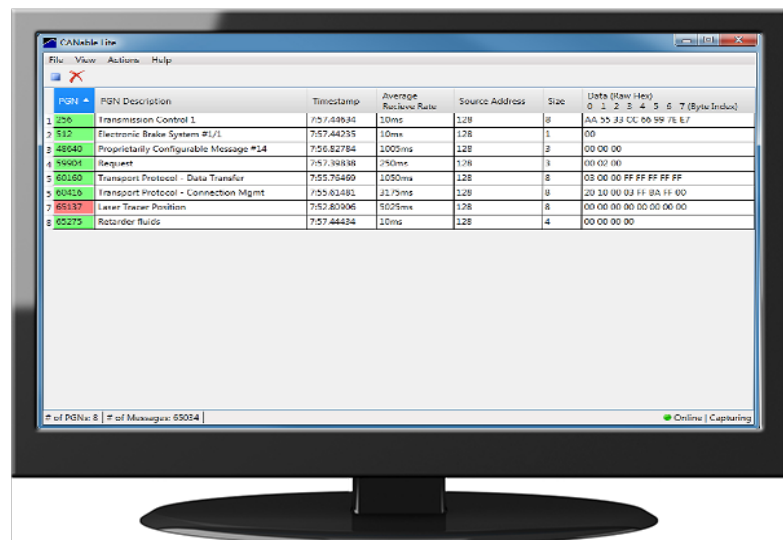
NetStax™ CANable Lite

J1939 NETWORK VIEWING TOOL

Pyramid's NetStax™ CANable Lite PGN monitoring tool is a highly valuable, inexpensive and easy to use software tool for use in applications that require J1939 connectivity. CANable Lite can eliminate days, or even weeks of troubleshooting a J1939 network by showing you captured J1939 network message traffic.

With CANable Lite, you will be able to quickly and easily view the J1939 PGN (parameter group number) messages on a CAN network, taking the guesswork out of integration and troubleshooting. CANable Lite captures the J1939 PGN messages it detects on the network and displays the PGN, source and destination address and raw message data in a Chronological View (every received PGN displayed in a Chronological list) or condensed into a PGN View (only shows one instance of each unique PGN with the latest data and activity level).

CANable Lite is very useful when integrating equipment and diagnosing communications between devices on a J1939 network. Setup, configuration and operation of the tool is easy and doesn't require a deep dive as with other CAN Analyzer tools. CANable Lite operates on a standard Windows PC/Laptop and doesn't require additional equipment or software. It's as simple as installing the software, attaching the included CAN to USB interface to your PC/Laptop and connecting to a J1939 (CAN) network.



PYRAMID
SOLUTIONS