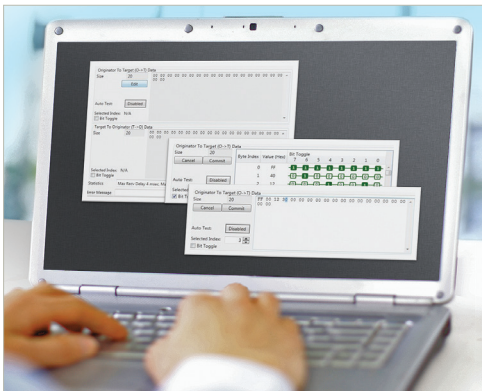


Benefits

- Visual connection and data GUI
- Aids development and testing
- Rich set of features
- Client and Server functionality



EtherNet/IP™

PYRAMID SOLUTIONS

NetStaX™ EIPScan

ETHERNET/IP SCANNER SIMULATOR TOOL

Pyramid Solutions' NetStaX™ EtherNet/IP Scanner Simulation Tool (EIPScan) is a PC/Windows™ application that allows you to test EtherNet/IP messaging and connections.

EIPScan is an extremely useful tool for testing and debugging EtherNet/IP products during development and for end of line testing and field testing/demonstration of products shipping to end customers.

Why purchase EIPScan?

- Quick and easy to use
- Simplifies EtherNet/IP product development and testing
- Provides a rich set of features for product testing, debugging and demonstration

EIPScan Features

Simulation and Testing

- Connect to devices through one or more Ethernet interfaces on the PC
- Browse the network(s) for devices or manually add them
- Configure and schedule Implicit (I/O) and connected Explicit connections
- View I/O input data and modify output data with improved user interface
- Send connected and unconnected explicit messages
- Built in automated testing of explicit and implicit connections
- Browse File Object contents of devices on the network

EtherNet/IP Compatibility

- Scanner Class (client / originator) functionality
- Adapter Class (server / target) functionality
- UCMM (unconnected) explicit messaging client and server
- Class 3 (connected) explicit messaging client and server
- Class 1 (I/O) implicit connection client and server
- Works with Rockwell Software's RSNetWorx™ for EtherNet/IP

Platform Compatibility

- Microsoft Windows XP, Vista and Windows 7, 8/8.1, and 10
- Minimum PC: Pentium II, 233MHz
- EDS file compatible with RSNetWorx for EtherNet/IP

Supported/Included Objects

- Message Router
- Connection Manager
- Identity
- Ethernet Link
- TCP/IP
- Port
- Assembly
- Connection Configuration Object
- CIP Modbus Translation (routing to Modbus/TCP)

Product Includes

- EIPScan executable
- EIPScan User Reference Manual