

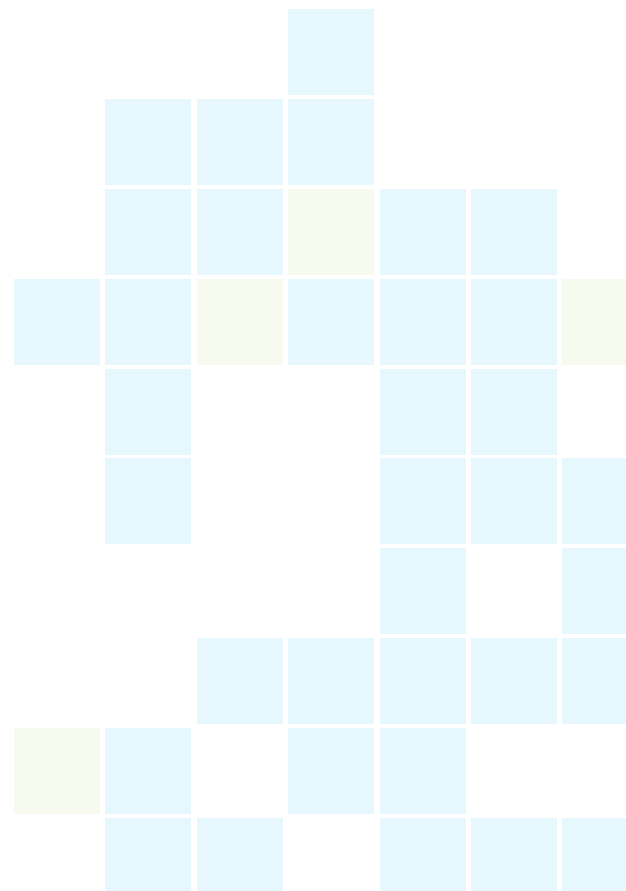
Network Connectivity Product Directory

BridgeWay Gateways

NetStaX Protocol Stack Source Code

NetStaX DLLs, Middleware & Drivers

NetStaX Development & Testing Tools



BridgeWay™ Gateways



Ethernet to DeviceNet (BW4030)

Monitor and control your devices with BW4030. The gateway which operates as a Master or Slave and delivers on-demand DeviceNet messages directly from EtherNet/IP or Modbus TCP on a DeviceNet network.

- Ethernet/IP or Modbus TCP to DeviceNet gateway
- DIN rail mountable
- Temp range: -25 - 70 °C
- USB configuration
- Monitor/control up to 63 DeviceNet slave devices
- Dimensions: L=4.33" (110 mm) W=1.38" (35 mm) H=3.98" (101 mm)



J1939 to Modbus Interface (BW2031)

The BW2031 monitors PGN messages, including DM1 and DM2, sends PGN messages and delivers on-demand messages directly from Modbus RTU on a J1939 (CAN) network.

- J1939 to Modbus RTU (RS-485 2-wire) Interface gateway
- DIN rail mountable
- Temp range: -25 - 70 °C
- USB configuration
- Dimensions: L=4.33" (110 mm) W=1.38" (35 mm) H=3.98" (101 mm)



Ethernet to J1939 (BW4031)

The BW4031 allows users to monitor PGN messages, including DM1 and DM2, send scheduled PGN messages and view on-demand PGN messages directly from EtherNet/IP or Modbus TCP on a J1939 (CAN) network.

- EtherNet/IP Adapter or Modbus TCP Slave to J1939 gateway
- DIN rail mountable
- Temp range: -25 - 70 °C
- USB configuration
- Dimensions: L=4.33" (110 mm); W=1.38" (35 mm); H=3.98" (101 mm)



PROFIBUS to J1939 (AB7614)

The AB7614 enables a PROFIBUS DP Master PLC, HMI or other compatible device to connect to an SAE J1939 (CAN) network. This gateway monitors PGN messages, including DM1 and DM2, sends scheduled PGN messages on a J1939 network and supports PROFIBUS diagnostics.

- PROFIBUS DP to J1939 gateway
- DIN rail mountable
- Temp range: 0 - 70 °C
- Metal enclosure
- Dimensions: L=4.96" (126 mm)
W=4.30" (109 mm) H=1.65" (42 mm)



PROFIBUS to DeviceNet (AB7605)

The AB7605 enables a PROFIBUS DP Master PLC, HMI or other compatible device to connect to a DeviceNet network. It operates as a Master or Slave on a DeviceNet network and supports PROFIBUS diagnostics.

- PROFIBUS DP to DeviceNet gateway
- DIN rail mountable
- Temp range: 0 - 70 °C
- Monitor/control up to 63 DeviceNet slave devices
- Metal enclosure
- Dimensions: L=4.96" (126 mm)
W=4.30" (109 mm) H=1.65"



Ethernet to J1939 (AB7645)

The AB7645 gateway enables a Modbus TCP Master PLC or HMI to connect to an SAE J1939 (CAN) network. It monitors PGN messages, including DM1 and DM2, and sends scheduled PGN messages on a J1939 network.

- Ethernet to J1939 gateway
- DIN rail mountable
- Temp range: 0 - 70 °C
- Metal enclosure
- Dimensions: L=4.96" (126 mm)
W=4.30" (109 mm) H=1.65" (42 mm)



EtherNet to DeviceNet (AB7603)

Monitor and control your devices with AB7603. It operates as a Master or Slave and delivers DeviceNet messages directly from Ethernet/IP to a DeviceNet network.

- Ethernet/IP or Modbus TCP to DeviceNet gateway
- DIN rail mountable
- Monitor/control up to 63 DeviceNet slave devices
- Temp range: 0 - 70 °C
- Metal enclosure
- Dimensions: L=4.96" (126 mm) W=4.30" (109 mm) H=1.65" (42 mm)

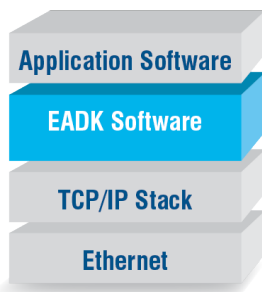


J1939 to Modbus Interface (AB7606)

The AB7606 enables Modbus RTU Master PLCs, HMIs or other compatible device to connect to an SAE J1939 (CAN) network. It monitors PGN messages, including DM1 and DM2, and sends scheduled PGN messages on a J1939 network.

- J1939 to Modbus RTU (RS-485 2-wire) Interface gateway
- DIN rail mountable
- Temp range: 0 - 70 °C
- Metal enclosure
- Dimensions: L=4.96" (126 mm) W=4.30" (109 mm) H=1.65" (42 mm)

NetStax™ Protocol Stack Source Code



EtherNet/IP Adapter Development Kit (EADK)

Introduce EtherNet/IP Adapter Class (server/target) functionality into your embedded devices and PC/Windows-based applications.

Quickly enable your devices to act as servers or targets for implicit and explicit connections with EADK. EADK includes full stack source code that is designed for portability across platforms and includes pre-built 32/64-bit DLLs. It also enables your devices to originate unconnected explicit messages and read and write single or multiple tags in Rockwell PLCs (via UC messages only).

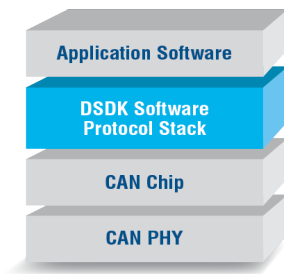
NetStaX™

NetStaX™ ESDK

EtherNet/IP Scanner Development Kit (ESDK)

Introduce EtherNet/IP scanner and adapter class (client/originator and server/target) functionality into your embedded devices and PC/Windows-based applications.

Quickly enable your devices to act as servers or targets for implicit and explicit connections with EADK. EADK includes full stack source code that is designed for portability across platforms and includes pre-built 32/64-bit DLLs. It also enables devices to act as servers for these connections and to read and write single/ or multiple tags in Rockwell Automation PLCs.



DeviceNet Slave Development Kit (DSDK)

Add scalable DeviceNet Slave functionality to your embedded devices and systems.

The DSDK contains full source code for a full-featured DeviceNet Slave stack, designed for portability across platforms and operating systems.

NetStaX™ DMDK

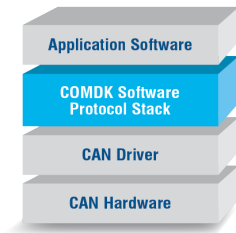
DeviceNet Master Development Kit (DMDK)

Integrate field-proven DeviceNet Master and I/O scanner source code into your DeviceNet products. The source code operates in a real-time, multitasking operating system that supports messaging queues, event flag recognition, interruption handling and timer functions.

NetStaX™ CSDK

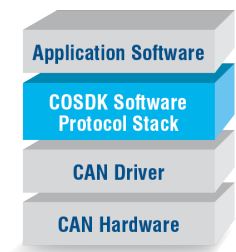
ControlNet Scanner Development Kit (CSDK)

Add ControlNet Scanner, Adapter and Message Class functionality to products with NetStaX CSDK. The CSDK gives product developers a complete set of functions to enable ControlNet connectivity without the need for detailed knowledge of the product.



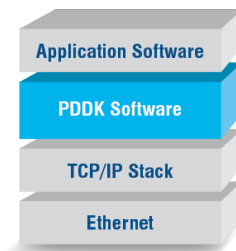
CANopen Master Development Kit (COMDK)

The COMDK introduces CANopen Master functionality into your products and systems. Quickly and easily develop master and slave devices and serve one or multiple CAN-controllers in one device.



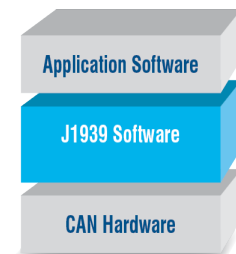
CANopen Slave Development Kit (COSDK)

The COSDK introduces CANopen Slave functionality to products and systems. It facilitates simple and rapid development of slave devices and serves one or multiple CAN controllers in one device.



PROFINET Device Development Kit (PDDK)

Introduce PROFINET Device (Slave) functionality into products and systems. The PDDK provides conformance Class A, real-time Class 1 and Class UDP functionalities.



J1939 Device Development Kit (JDDK)

Introduce SAE J1939 functionality into your products and systems to monitor and control on a J1939 network.

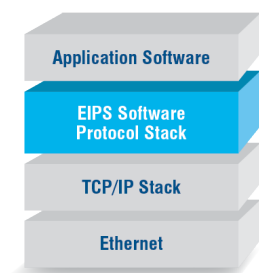
By communicating with ECUs, sensors, I/O and actuators, JDDK helps you achieve functionality in your device.

The JDDK contains a full source code J1939 stack with diagnostics (DM1 and DM2) support.

ControlNet Adapter Development Kit (CADK)

Add Adapter and Messaging Class functionality to products using field-proven software source code. CADK gives product developers a complete set of functions that make it easy to connect a product to ControlNet.

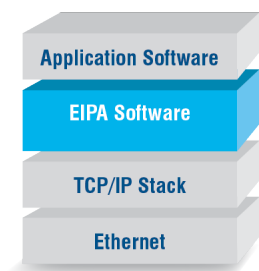
NetStax™ DLLs, Middleware & Drivers



The EtherNet/IP Scanner DLL Kit (EIPS)

EIPS introduces EtherNet/IP Scanner and Adapter Class functionality into your PC/Windows-based applications and products.

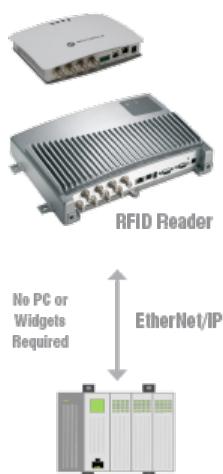
The EIPS includes pre-built 32/64-bit DLLs with a logical API to quickly enable your applications to originate implicit and explicit messages. The EIPS also enables your application to act as a server for these connections and messages as well as to read and write single or multiple tags in Rockwell PLCs.



EtherNet/IP Adapter DLL Kit (EIPA)

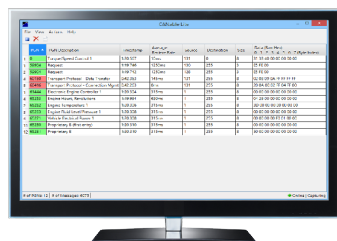
The EtherNet/IP Adapter DLL Kit brings EtherNet/IP Adapter Class functionality to your PC/Windows-based applications and products.

The EIPA includes pre-built 32/64-bit DLLs with a logical API to quickly enable your applications to act as servers for implicit and explicit messages. The EIPA also enables your application to originate unconnected explicit messages and read and write single or multiple tags in Rockwell PLCs.



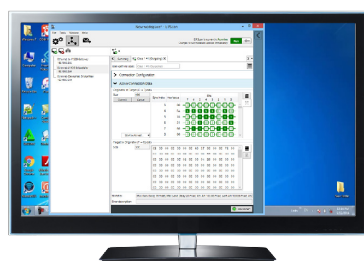
EtherNet/IP Middleware and Driver Package (EIPLD-M)

Interface your Motorola/Zebra XR440, 450, 480 or FX7400 series fixed-RFID reader to Rockwell Automation ControlLogix/CompactLogix Controllers to command RFID devices to read and write RFID tags using standard EtherNet/IP messaging.



CANable Lite

CANable Lite is a simple, inexpensive and easy-to-operate PC/Windows tool that contains the CANable Lite software and a USB to CAN adapter. It allows users to view the J1939 PGN (parameter group number) messages on a J1939 network, taking the guesswork out of integration and troubleshooting.

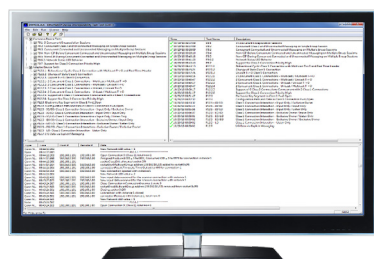


EtherNet/IP Scanner Simulator

EIPScan can quickly communicate with EtherNet/IP-connected devices and systems.

EIPScan is an application that operates on a standard Windows PC and Ethernet port(s).

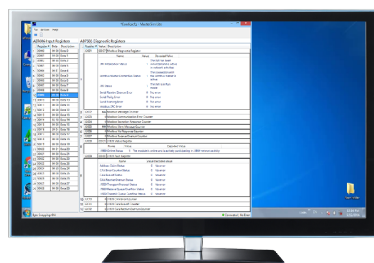
EIPScan is widely used for the development, testing and debugging of EtherNet/IP products as well as conducting end-of-line testing, field testing and demonstrating your EtherNet/IP products to end customers.



EtherNet/IP Device Interoperability Test Tool (EDITT)

EDITT is a specialized software tool that automates the Adapter Test sections of the ODVA EtherNet/IP Interoperability Plugfest Test procedure.

EDITT is a PC/Windows software application that runs on standard PC hardware.



MasterSim Lite

MasterSim Lite is a simple and easy-to-operate Modbus RTU Master Simulator package that contains the MasterSim Lite software and a USB to RS485 adapter. It connects our AB7606 and BW2031 to enable J1939 to Modbus interfaces.

MasterSim Lite quickly confirms that the gateway device is functioning properly before and/or during integration with an actual Modbus RTU Master PLC or other compatible devices.

Contact Us

PyramidSolutions.com

Sales@PyramidSolutions.com

1.248.549.1200

